

CONCEALED HINGES

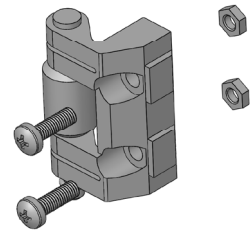
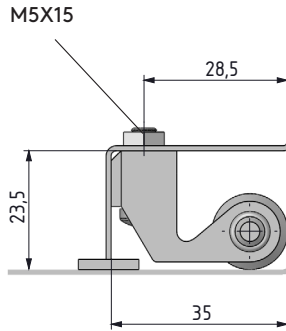
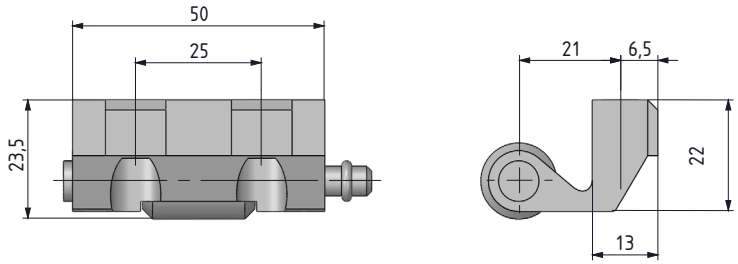
CONCEALED HINGE

296



- RoHS
-

V:1



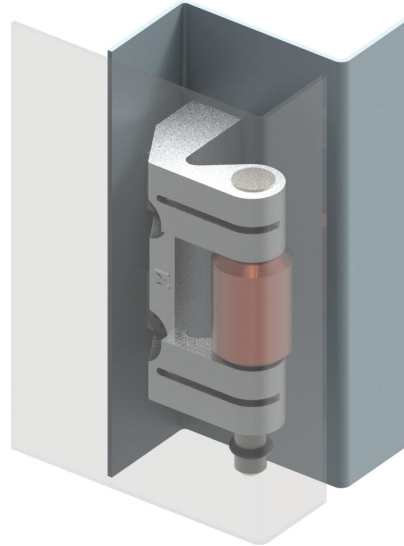
- For doors with a 23.5 mm bend.
- Smaller, more competitive alternative to 096 hinge

MATERIAL

BODY: Zamak DIN-EN 1774-ZnAl4Cu1
 FIXED PART: Steel

FINISH

BODY: Zinc plated or no finish
 WELDING PART: Copper plated



Hinge Rotation Angle

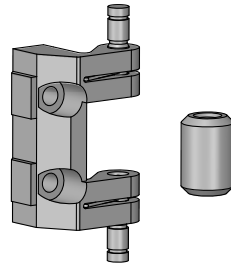
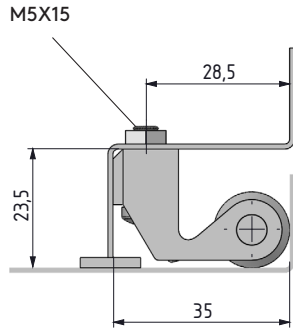
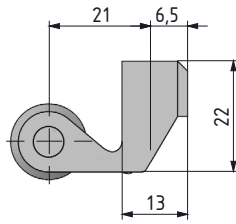
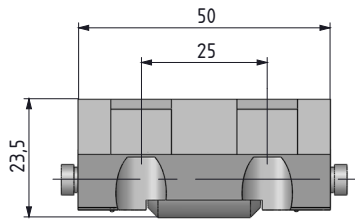


Note: Bolts are not supplied

MATERIAL	M	FINISH	F
Zamak	1	Zinc plated	3
		No finish	0

Group Code	Material	Finish	Version
296	1	F	1

V: 2



296

CONCEALED HINGE



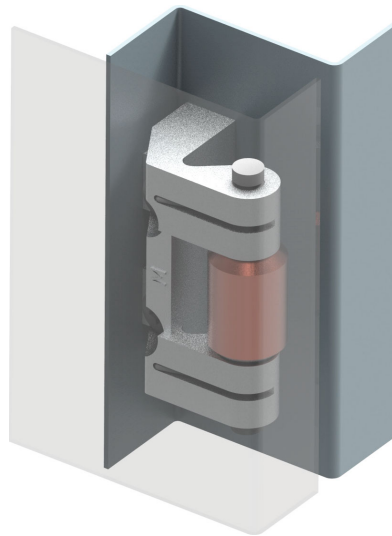
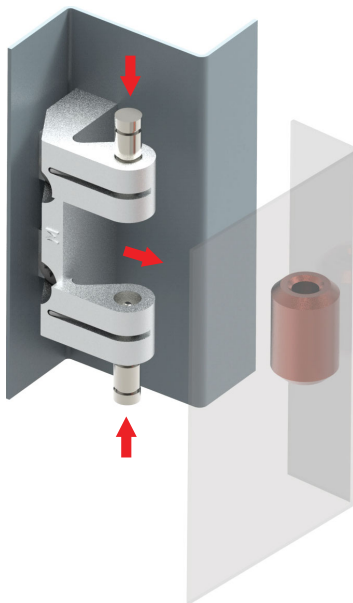
- Door part can be removed out from frame part without removing the pins
- Provides easy assembly
- Suitable for 23.5mm door bend

MATERIAL

BODY: Zamak DIN-EN 1774-ZnAl4Cu1
 FIXED PART: Steel

FINISH

BODY: Zinc plated or no finish
 FIXED PART: Copper plated



MATERIAL	M	FINISH	F
Zamak	1	Zinc plated	3
		No finish	0

Group Code	Material	Finish	Version
296	1	F	2

Hinge Rotation Angle



! Note: Bolts are not supplied