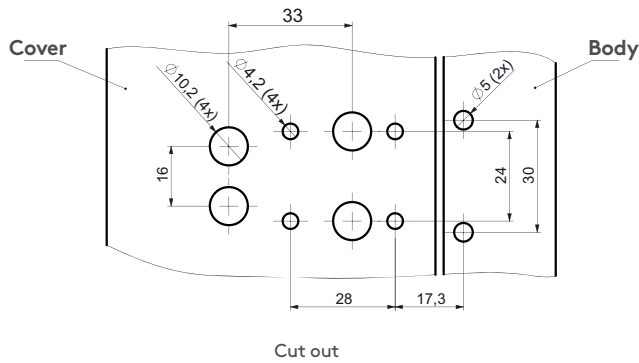
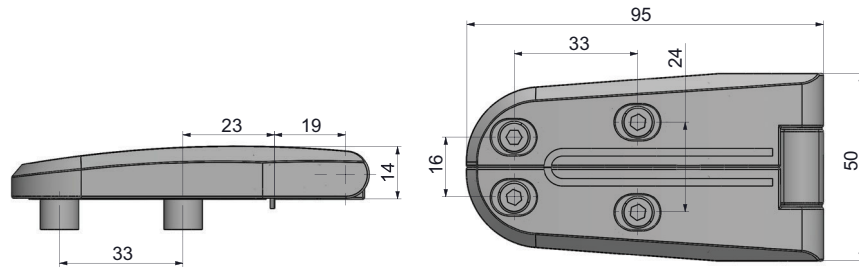




1500

HVAC HINGE



- It is specially designed for easy mounting in double hull insulation door.
- Hinge rotation 180°.
- It can adjust 3mm in vertical and horizontal direction.
- Bolts are sent assembled on the product.

**MATERIAL**

BODY: Zamak DIN-EN 1774-ZnAl4Cu1  
 PIN: Stainless Steel  
 BOLTS: Stainless Steel

**⚠ Note:** Bolts are supplied



MATERIAL	M	FINISH	F
Zamak	1	Chrome plated	1
		Black coated	2

Group Code	Version	Material	Finish
1500	2	1	F