

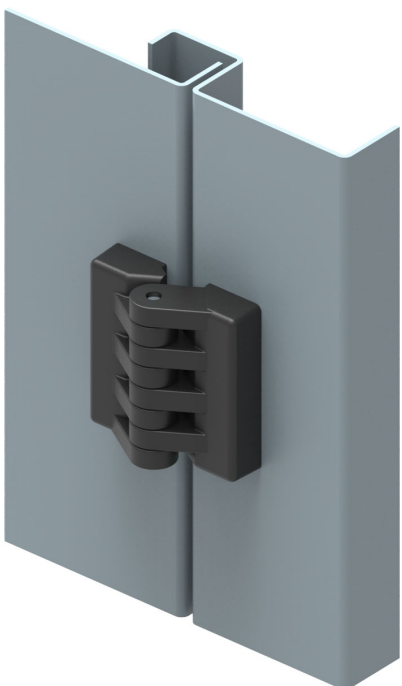
1199

LEAF HINGE



- Generally used for plain/flush-mounted doors
- With- or without-bolt options are available
- Stainless steel pin

**MATERIAL**  
 BODY: Polyamide DIN-EN ISO 1043-1 PA 6 GFR 30  
 PIN: Stainless Steel



MATERIAL	M	FINISH	F
Plastic	2	No finish	0

Group Code	Material	Finish	Version
1199	2	0	V

Hinge Rotation Angle  
 180°